



7Skyline, LLC provides environmental planning, due diligence, risk mitigation, permitting, technical studies, and regulatory support services for companies developing transmission, renewables, and other energy projects throughout North America.

ENVIRONMENTAL & ENERGY CONSULTING FOR UTILITIES & ENERGY DEVELOPERS

7Skyline is certified by the California Public Utilities Commission (CPUC) as a Women Business Enterprise (WBE) and registered as a Disadvantaged Business Enterprise (DBE), a women-owned business, an Emerging Small Business (ESB), and an Emerging Business Enterprise (EBE) in the state of Oregon. Principal Consultant Jennifer

industry includes overseeing or consulting on dozens on high-profile energy projects over 20 years. Prior to founding 7Skyline she served as the Vice President of Environmental Development for Abengoa, Transmission & Infrastructure, LLC.

Her work includes spearheading the environmental strategy for Ten West Link, a 500-kV electric transmission project.

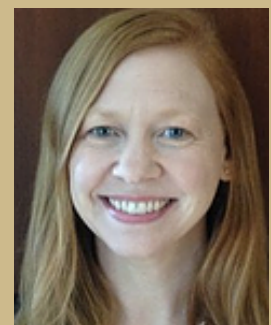
Prior to working at Abengoa, Jennifer served as a global program manager for CH2M Engineering and as a principal environmental planner at Ecology and Environment, Inc. 7Skyline, LLC provides management consulting and technical support for energy companies planning to develop new, utility-scale renewable energy and transmission facilities nationwide.

“Jen Rouda is a very articulate and engaging leader... Jen knows how to navigate challenges and find solutions when encountering multiple obstacles and she is an asset to any team. I fully endorse Jen Rouda as an exceptional strategic consultant for electric transmission and renewable energy project planning.”

-- Jerry Silva, Reliability Compliance Manager, Southern California Edison

“Jennifer brings a strong combination of subject matter expertise and problem-solving skills, a real asset on complex or tricky projects involving multiple stakeholders. Her work on an integrated environmental, health, and social impact assessment was key to the project’s success, specifically because of her ability to navigate complex relationships and engage with the key players to achieve their support.”

-- Jennifer Michael, Senior Environmental Policy Advisor, Chevron



Founder and Principal Consultant Jennifer Rouda



7Skyline is available to support complex, multi-state, controversial energy projects subject to extensive regulatory review, including:

- Electric transmission
- Solar photovoltaic (PV)
- Wind energy
- Energy storage
- Liquefied natural gas terminals
- Offshore facilities
- Data centers
- Telecommunications
- Oil and gas pipelines

Current 7Skyline Services:

- Preliminary project siting
- Permitting and risk analysis
- Environmental planning
- NEPA/CEQA support
- Due diligence
- Regulatory support
- Tribal liaison services
- Stakeholder engagement
- Public meeting facilitation
- Mitigation and monitoring plans
- Renewable energy market research
- Visual resources assessments
- Paleontological resources assessments
- Construction monitoring
- Transmission planning
- Community solar planning
- Contract negotiations
- Management consulting
- Equipment procurement
- Power system services
- Resource development services
- Critical infrastructure protection
- Cybersecurity
- Systems studies
- Owner's representative services
- Renewable portfolio studies
- Energy market impact studies



7Skyline Also Delivers Systems Engineering & T&D Design Support

7Skyline, LLC brings transmission and renewable energy veterans to provide a range of engineering services and power system studies capabilities in addition to environmental planning. Through teaming agreements with leading independent experts in California and Arizona 7Skyline offers experienced, cost effective energy experts to select, initiate, model, permit, design, and manage transmission and renewables projects throughout the development lifecycle.

Leadership Reference:

Josh Finn
Founder and Managing Director
Navajo Power, PBC
joshua.finn@navajopower.com
Phone: (206) 719-1807

Contact 7Skyline:

Jennifer Rouda
Founder and Principal
Consultant

Email: Jennifer@7Skyline.com
Phone: (510) 225-8330
Website: www.7Skyline.com