



Environmental & Energy Consulting for Utilities & Energy Developers

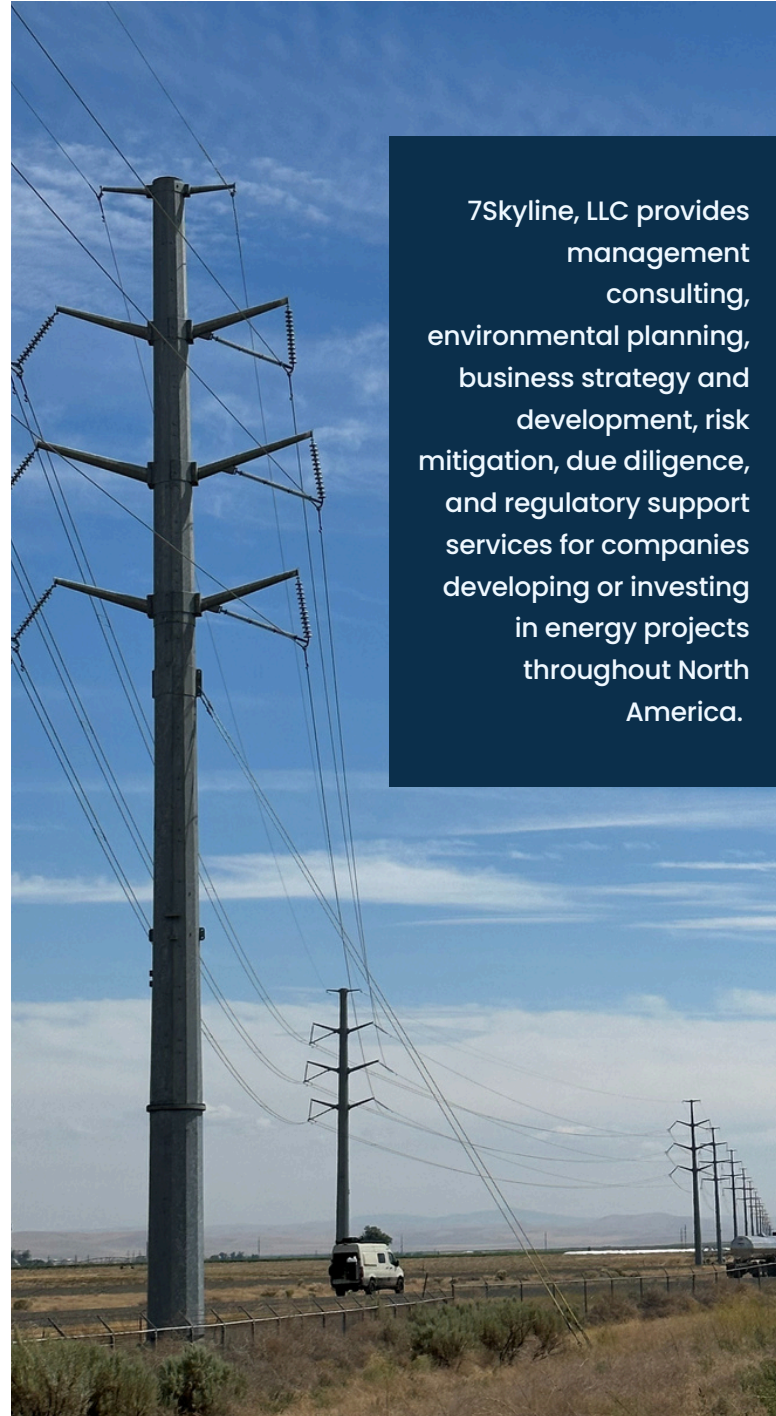
7Skyline is a certified Women Business Enterprise (WBE) and small business in the state of Oregon. Founder and Principal Consultant Jennifer Rouda's 25+ years of strategic planning experience includes overseeing and consulting on dozens of high-profile energy infrastructure projects, including electric transmission, solar, battery energy storage, wind, and pumped hydro projects. 7Skyline currently has a core team of 11 energy experts in addition to technical subcontractors and partners.

7Skyline provides technical support for utilities, companies, organizations and tribes planning to develop new, utility-scale renewable energy, storage and transmission with substantial community benefits.

Current Partners and Projects

Recent clients include: The Nature Conservancy, Warm Springs Power and Water Enterprises, HP, inc, Radia, Southern California Edison, Rye Development, JERA, Atlantica Yield, Navajo Power, PBC, and the Confederated Tribes of the Umatilla Indian Reservation, Colorado River Indian Tribes, Hoopa Valley Tribe, Obsidian, and Starwood Energy Group.

7Skyline Network partner firms include Colusa Indian Energy, Red Plains Professional, and Seneca Environmental.



7Skyline, LLC provides management consulting, environmental planning, business strategy and development, risk mitigation, due diligence, and regulatory support services for companies developing or investing in energy projects throughout North America.



7Skyline is available to support complex, multi-state, controversial energy projects subject to extensive regulatory review, including:

- Electric Transmission
- Solar, Wind Energy, & Storage
- Offshore Facilities
- Data centers
- Oil and Gas Pipelines
- Liquefied natural gas terminals
- Telecommunications

Current 7Skyline Services:

- Preliminary project siting
- Permitting and risk analysis
- Environmental planning
- NEPA/CEQA
- Tribal liaison services
- Stakeholder engagement
- Public meeting facilitation
- Mitigation and monitoring plans
- Renewable energy market research
- Visual resources assessments
- Paleontological resources assessments
- Construction monitoring
- Transmission planning
- Community solar planning
- Contract negotiations
- Management consulting
- Equipment procurement
- Power system services
- Resource development services
- Critical infrastructure protection
- Remediation support
- Systems studies
- Owner's representative services
- Renewable portfolio studies
- Energy market impact studies

7Skyline, LLC brings transmission and renewable energy experts to provide a range of engineering services and power system studies capabilities in addition to environmental planning. Through teaming agreements with leading independent experts in California and Arizona 7Skyline offers experienced, cost effective energy experts to select, initiate, model, permit, design, and manage transmission and renewables projects throughout the development

Contact Information:
Jennifer Rouda, Founder and Principal Consultant
Email: Jennifer@7Skyline.com
Phone: (510) 225-8330
www.7Skyline.com

Current Referral
Nicole Hill, Arizona Climate Program Director
The Nature Conservancy
nicole.hill@tnc.org